

Upholstery

ROOTS

COLLECTION

BLISS

EMOTIONAL PERFORMANCE FABRICS



BLISS

EMOTIONAL PERFORMANCE FABRICS

BLISS is a new brand created by people who have been in the textile industry for a very long time. We have inherited the technical knowledge and resources of Citel – the outdoor performance fabrics manufacturer founded back in 1875 in Barcelona – and added a special sensitivity and aesthetic perspective. BLISS mission is to manufacture performance and decorative fabrics made by and for the senses.

Our team wanted to create a brand that not only demonstrated their technical know-how regarding 100% solution-dyed acrylic fabrics, but also expressed their philosophy of life. BLISS is built on passion, new ideas, effort and an ongoing desire for improvement.

Creating is our favourite state of mind - our bliss -, and the desire to imagine, envision and manufacture fabrics that are truly special is our very reason for being.

Essential ROOTS collection

Stepping back into who we really are.

Something that endures over time, over generations, is something significant. Like popular wisdom and culture, the intangible treasures of any civilisation, aesthetics and visual perspective are gems that have been transmitted over time, even unconsciously. This collection recaptures traditional aesthetics and moulds perennial trends in order to arrive at new but, at the same time, age-inspired designs that are ideally suited for our contemporary lifestyle.

This collection is a blend of textures, finishes and materials. Who would have thought the classics still had so much to say? A vintage look and feel to revitalise any space.



ROOTS COLLECTION

Composition: 100% solution dyed acrylic

Outdoor and indoor use

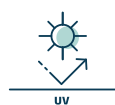


Width: 140 cm (55")

Roll length: 50 m (55 yards)

Warranty: 5 years

Features



UV resistant



Maximum color fastness



Eco long-lasting



Water repellent



Stain repellent



Rotproof and mildew resistant



Suitable for aquatic environments



Easy care



Bleach cleanable

Flame retardancy

NFPA 260

EN 1021-1

BS 5852-1(S4)

CA TB 117

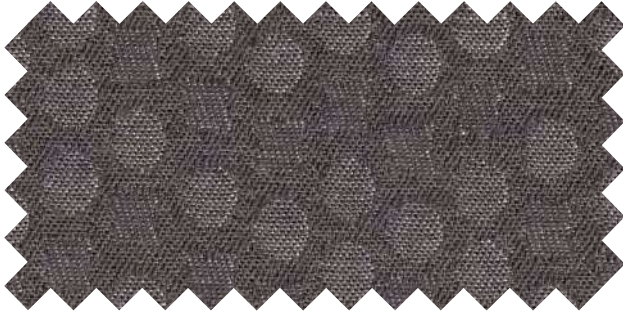
Cleaning instructions



Technical data	Standard	Bud	Core	Seed	Sprout	Stem
Weight (g/m ²):	UNE 40339	245	410	350	245	410
Rapport: (H x V)		14 x 14 cm 5,5 x 5,5"	→ 6 cm → 2,36"	17,5 x 7 cm 6,89 x 2,75"	23 x 21 cm 9,05 x 8,27"	→ 3,5 cm → 1,38"
Spray Test (max. 100)	UNE-EN ISO 4920	100	100	100	100	100
Oil repellence (max. 6):	AATCC 118	6	6	6	6	6
Colour fastness to artificial weathering (max. 8):	UNE-EN ISO 105-B04	7-8	7-8	7-8	7-8	7-8
Colour fastness to artificial light (max 8)	UNE-EN ISO 105-B02	7-8	7-8	7-8	7-8	7-8
Colour fastness to chlorinated water (swimming-pool water) (max. 5):	UNE-EN ISO 105-E03	5	5	5	5	5
Colour fastness to sea water (max. 5):	UNE-EN ISO 105-E02	5	5	5	5	5

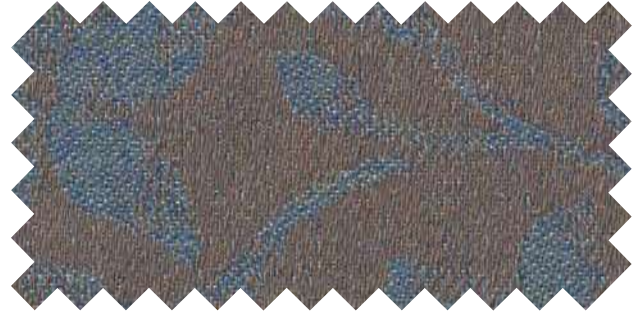
Tolerance +/- 5% average values. Non-contractual information. The data are result of tests performed in our laboratories. For more technical information, please contact us at info@blissfabrics.es

ROOTS COLLECTION



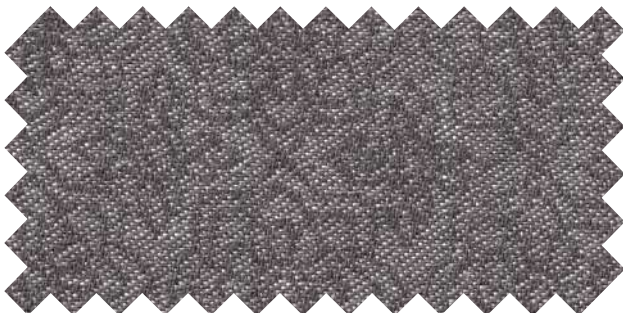
← Weft direction

01085 Seed Graphite Grey
Rapport (H x V): 17,5 x 7 cm / 6,89 x 2,75"



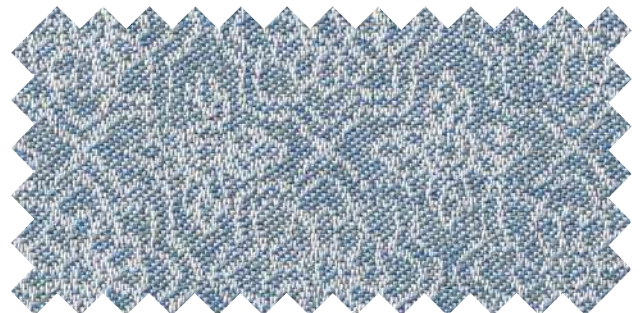
← Weft direction

01072 Sprout Mud Sea
Rapport (H x V): 23 x 21 cm / 9,05 x 8,27"



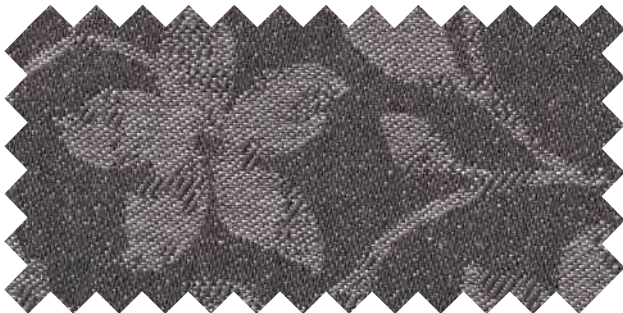
← Weft direction

01081 Bud Graphite Smoke
Rapport (H x V): 14 x 14 cm / 5,5 x 5,5"



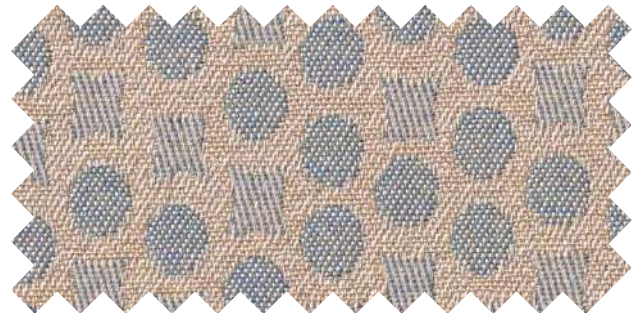
← Weft direction

01083 Bud White Sea
Rapport (H x V): 14 x 14 cm / 5,5 x 5,5"



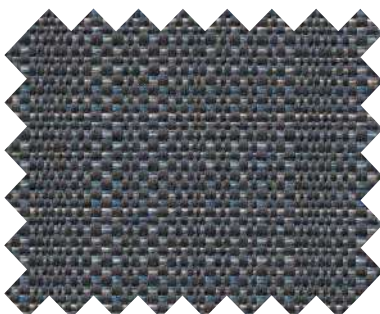
← Weft direction

01074 Sprout Graphite Smoke
Rapport (H x V): 23 x 21 cm / 9,05 x 8,27"



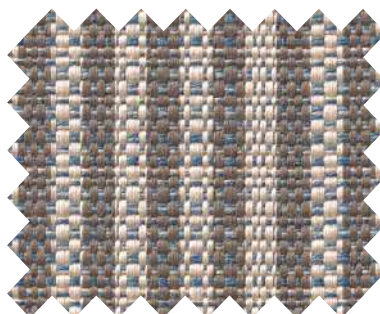
← Weft direction

01090 Seed Linen Sea
Rapport (H x V): 17,5 x 7 cm / 6,89 x 2,75"



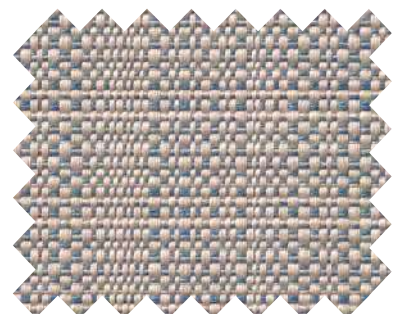
← Weft direction

01097 Core Graphite Sea
Rapport (H): 6 cm / →2,36"



← Weft direction

01105 Stem Linen Sea
Rapport (H): 3,5 cm / →1,38"



← Weft direction

01100 Core Linen Sea
Rapport (H): 6 cm / →2,36"

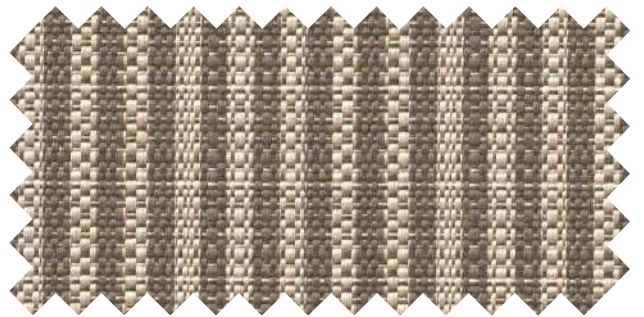


ROOTS COLLECTION



← Weft direction

01075 Sprout Graphite Meadow
Rapport (H x V): 23 x 21 cm / 9,05 x 8,27"



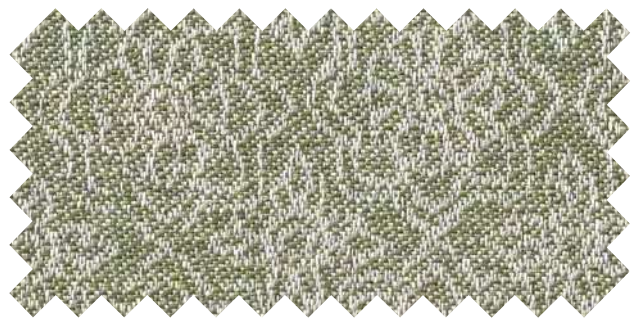
← Weft direction

01104 Stem Linen Moss
Rapport (H): 3,5 cm / →1,38"



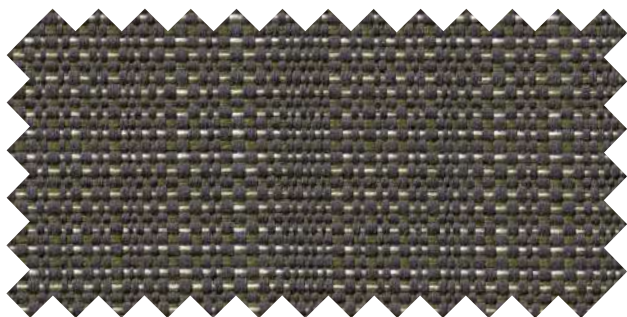
← Weft direction

01087 Seed Graphite Meadow
Rapport (H x V): 17,5 x 7 cm / 6,89 x 2,75"



← Weft direction

01084 Bud White Mos
Rapport (H x V): 14 x 14 cm / 5,5 x 5,5"



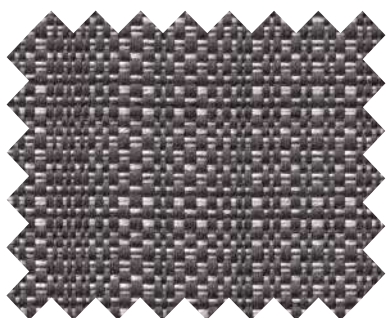
← Weft direction

01095 Core Graphite Moss
Rapport (H): 6 cm / →2,36"



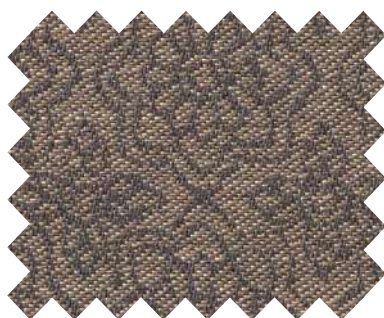
← Weft direction

01092 Seed White Meadow
Rapport (H x V): 17,5 x 7 cm / 6,89 x 2,75"



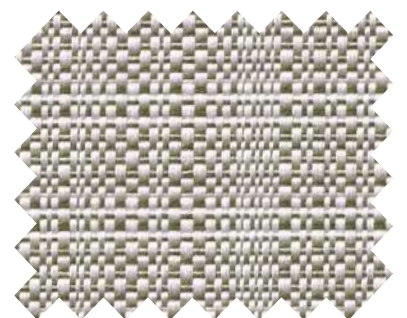
← Weft direction

01098 Core Graphite White
Rapport (H): 6 cm / →2,36"



← Weft direction

01080 Bud Graphite Walnut
Rapport (H x V): 14 x 14 cm
5,5 x 5,5"

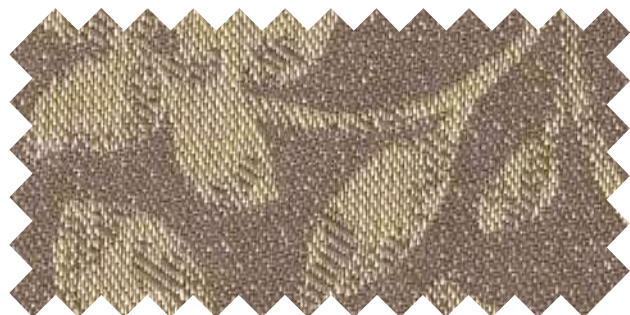


← Weft direction

01101 Core White Moss
Rapport (H): 6 cm / →2,36"

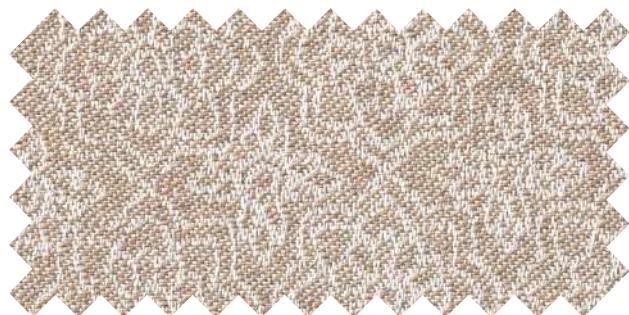


ROOTS COLLECTION



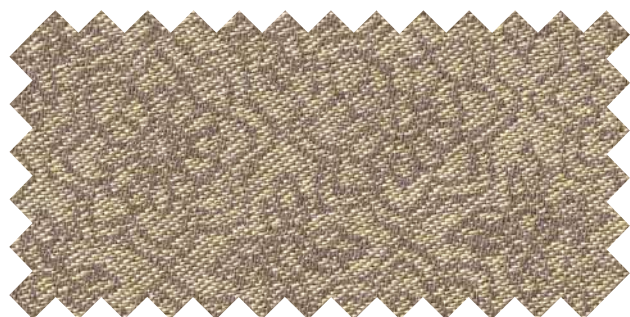
← Weft direction

01073 Sprout Mud Limonetto
Rapport (H x V): 23 x 21 cm / 9,05 x 8,27"



← Weft direction

01082 Bud White Walnut
Rapport (H x V): 14 x 14 cm / 5,5 x 5,5"



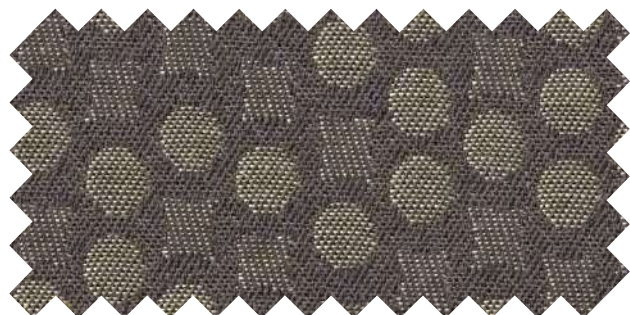
← Weft direction

01078 Bud Mud Limonetto
Rapport (H x V): 14 x 14 cm / 5,5 x 5,5"



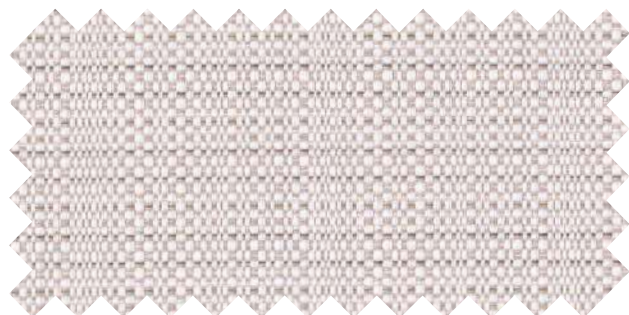
← Weft direction

01091 Seed White Walnut
Rapport (H x V): 17,5 x 7 cm / 6,89 x 2,75"



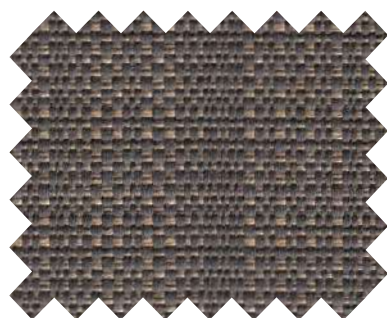
← Weft direction

01086 Seed Graphite Limonetto
Rapport (H x V): 17,5 x 7 cm / 6,89 x 2,75"



← Weft direction

01102 Core White Linen
Rapport (H): 6 cm / →2,36"



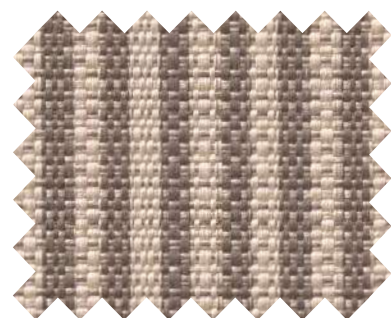
← Weft direction

01096 Core Graphite Walnut
Rapport (H): 6 cm / →2,36"



← Weft direction

01089 Seed Linen Limonetto
Rapport (H x V): 17,5 x 7 cm / 6,89 x 2,75"



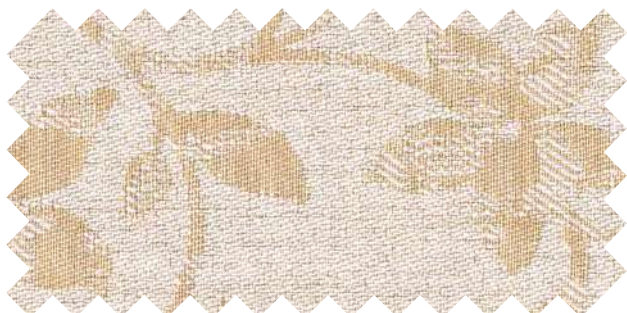
← Weft direction

01103 Stem Linen Mud
Rapport (H): 3,5 cm / →1,38"

Arise emotions and awake people senses

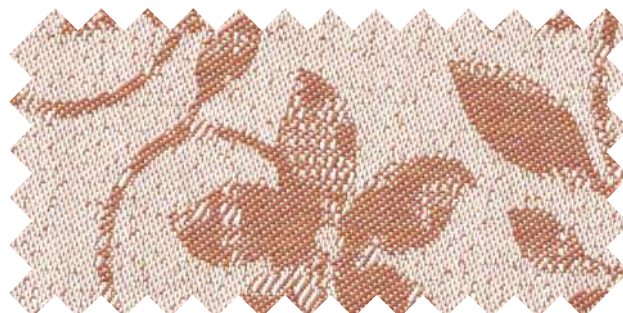


ROOTS COLLECTION



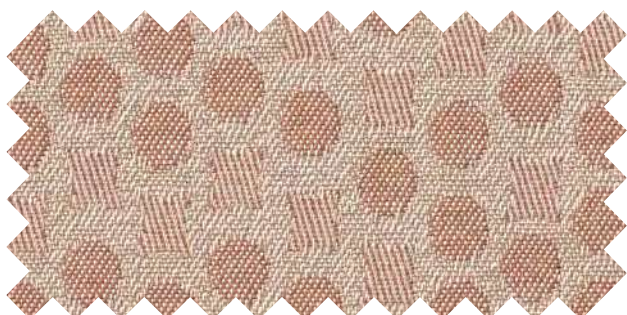
←→
Weft direction

001076 Sprout White Custard
Rapport (H x V): 23 x 21 cm / 9,05 x 8,27"



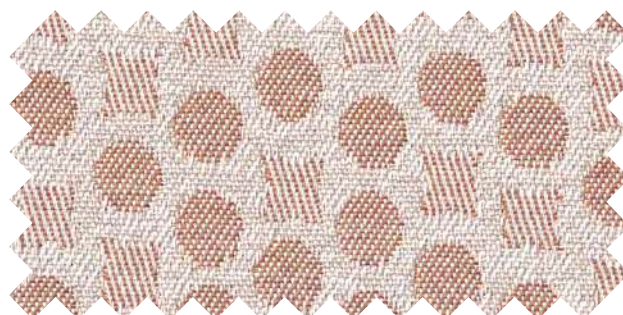
←→
Weft direction

01077 Sprout White Paprika
Rapport (H x V): 23 x 21 cm / 9,05 x 8,27"



←→
Weft direction

01088 Seed Linen Paprika
Rapport (H x V): 17,5 x 7 cm / 6,89 x 2,75"



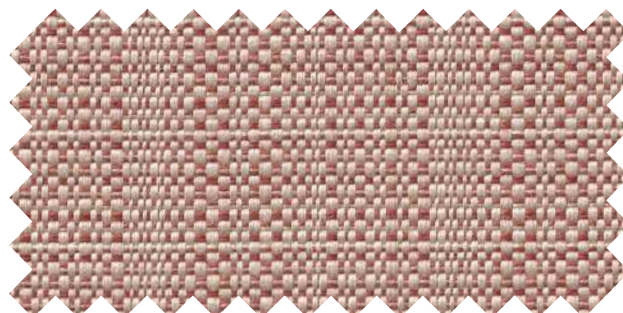
←→
Weft direction

01093 Seed White Paprika
Rapport (H x V): 17,5 x 7 cm / 6,89 x 2,75"



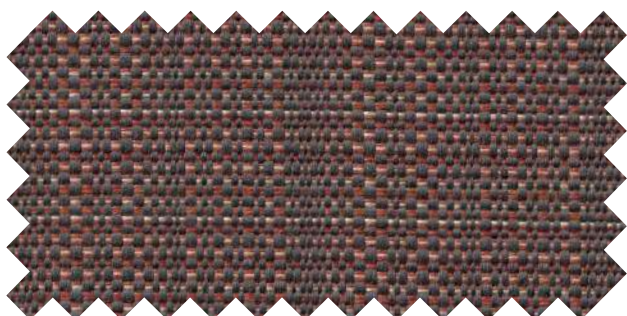
←→
Weft direction

01079 Bud Graphite Paprika
Rapport (H x V): 14 x 14 cm / 5,5 x 5,5"



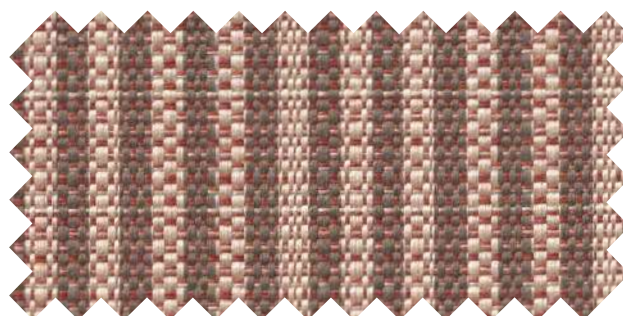
←→
Weft direction

01099 Core Linen Raspberry
Rapport (H): 6 cm / →2,36"



←→
Weft direction


01094 Core Graphite Brown
Rapport (H): 6 cm / →2,36"



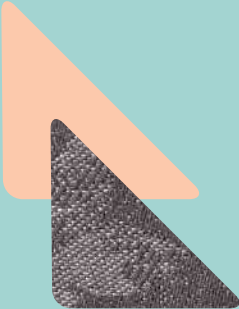
←→
Weft direction

01106 Stem Linen Raspberry
Rapport (H): 3,5 cm / →1,38"



Behind this collection there is a story



We have had a long and beautiful love story with textiles for more than 100 years. Now, we are ready for this new chapter in which we have found our true-self.



We will keep working to make Bliss a design-led innovator and fuse the technical branch of performance fabrics with the boundless creativity of the world of emotions, fashion and decorative textiles.



blissfabrics.com

Designed and manufactured with passion in Barcelona

BLISS
EMOTIONAL PERFORMANCE FABRICS

by **Citel**[®]

